

Improves team effectiveness by creating a frictionless flow of information across a unified delivery lifecycle

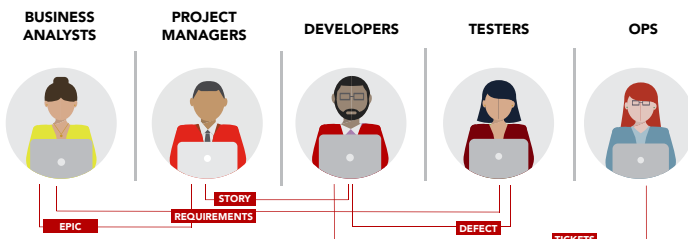
Enables visibility into the state of software delivery

Creates a modular, responsive software delivery toolchain

AUTOMATE INFORMATION FLOW BETWEEN TEAMS

With Planview Tasktop, requirements flow automatically from the BA's tool to the dev team's Agile planning tool and to the tester's test management tool. Defects are automatically recorded in the defect tracking tool when the code scanning tools find security vulnerabilities. Everyone works in their tools of choice, but has access to updates other team members make in theirs.

- No more manual re-keying of information.
- No more information scavenger hunts.
- No more mistakes caused by old or incomplete information.
- No more interminable email threads and status meetings.



START SMALL, SCALE FAST

Does your integration strategy match the scale at which your organization operates? Whether you're connecting two systems or 20, just a few projects or hundreds, your integrations need to be straightforward to set up and manage. Planview Tasktop incorporates the experience we've gleaned over a decade of learning the intricacies of:

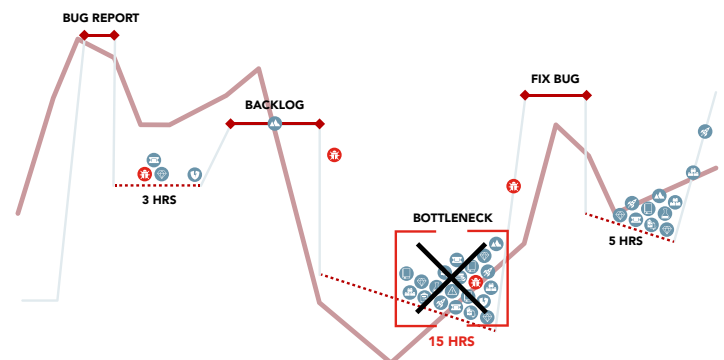
- How tools work?
- How they need to work together?
- How to integrate them while imposing a negligible performance load on them?

With Planview Tasktop, it's all built into our software. Easy things are easy, hard things are easy, and your budget is spared the startlingly high cost of professional services.

And with Planview Tasktop Hub Cloud®, you get affordable, anywhere, anytime access with predictable cost along with quick deployment. Planview Tasktop offers a private cloud solution designed to ensure business security and continuity. Planview Tasktop has strict standards in place to keep data safe.

VISIBILITY AND TRACEABILITY ACROSS YOUR VALUE STREAM

Individual tools can only report on the data they manage, giving you a fractured view of the health of your software delivery. Whenever artifacts change in any of the connected tools, activity data is streamed to a centralized database where it can be manipulated and visualized using standard business intelligence tools. Create consolidated dashboards and traceability reports. Identify bottlenecks. Get the real-time information you need to drive your business.



BENEFITS OF PLANVIEW TASKTOP HUB CLOUD

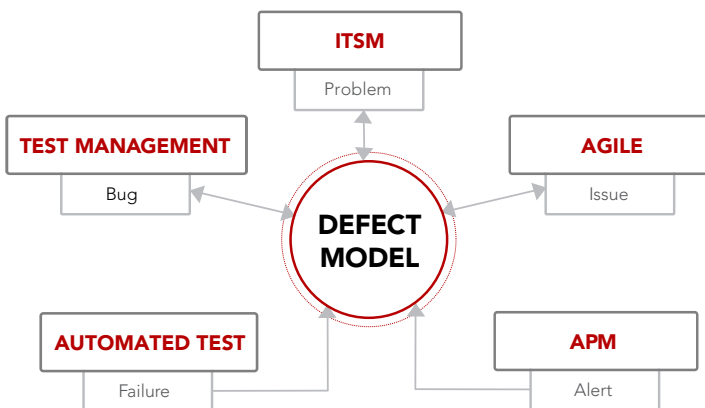
- Less operational effort (eg. upgrade, patching)
- Always on, always available
- Smaller carbon footprint
- Less expensive upfront investment, with no additional hardware investments.
- Comprehensive information security
- Strict data security standards
- Greater stability, continuous updates and shorter implementation time

INTEGRATION HAS NEVER BEEN EASIER

Get Beyond Point-to-Point with Model-based integration

Other techniques require that you create point to point mappings for each artifact in each tool. But model-based integration management eliminates this, allowing you to map artifacts to a central model, instead of creating those endless tool pairs. By using customizable models for the artifacts that flow through the value stream you can:

- Reduce the number of integrations that are created and maintained
- Enable rapid scaling to more tools and more projects
- Establish standards across tools and teams
- Reduce tool lock-in by creating a more loosely coupled integration



Scale to Hundreds of Projects Instantly

Planview Tasktop lets you configure an integration for one set of projects, get the artifact flow right, and then scale to hundreds or thousands of projects in seconds – with just a few clicks. Other techniques require you spend days or weeks tediously creating new mappings.

Out of the Box Models with Smart Mappings

Get started quickly with pre-configured models for common artifacts like defects, requirements and stories. Even better, our smart mapping feature automatically configures the maps between endpoints and the models for many of the most common artifact attributes.

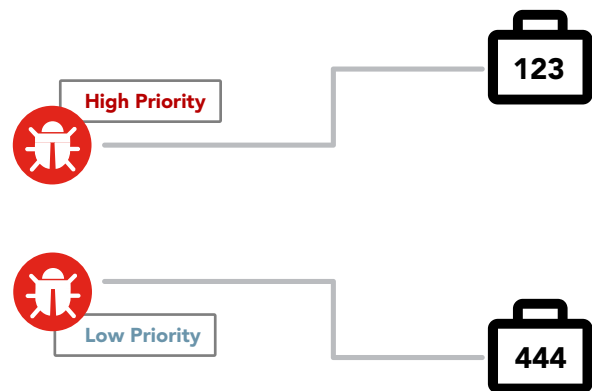
Save Your Coding Time for Your Applications

Being able to handle the complexity involved in tool integration is critically important, but complexity shouldn't mean weeks of coding. With Planview Tasktop's web-based integration designer and administration interface you can configure all your integrations with just a few clicks. Visually

integrate your tools landscape as you define conditional routes for artifacts to flow to specific repositories and projects, create filters, and graphically map artifact state transitions across toolchains. You get an intuitive user experience for defining and tuning the flow of information across your integration landscape.

Flow Artifacts to the Right Place at the Right Time

If your defects from Project A always go to Project 123, explicit routing can be used at configuration time, to define routing that happens every time you need to flow the artifact. If your answer is 'it depends', then you can conditionally route defects based on a specific value inside the artifact. For example, a defect with high priority could be sent to Project 123, while low priority is sent to Project 444.

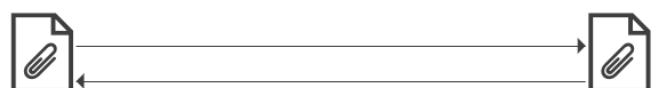


Preserve Information Context with Artifact Relationship Management

The relationships among artifacts provide context and information that's critical for working efficiently. Planview Tasktop's Artifact Relationship Management technology means that relationships like parent-child, validated-by, depends-on or blocked-by are not lost as artifacts flow between tools. Even when there are different artifact types or different artifact relationship types, Tasktop can mirror these relationships across tools, providing everyone the information they need. Planview Tasktop can also preserve work item context by automatically mirroring and harmonizing folder structures between tools.

Flow Attachments with Your Artifacts

Collaboration on software delivery projects isn't just about the artifacts. Planview Tasktop makes configuring shared attachments such as process diagrams, screenshots or diagrams straightforward, and you can even limit the size of synchronized attachments so they don't take up all your disk space.

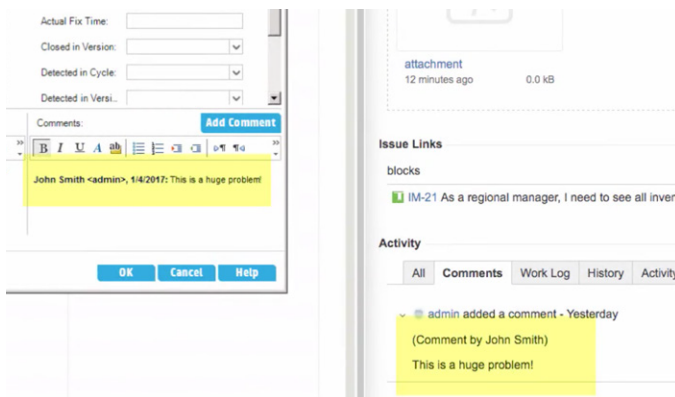


Communicate In Context with Comment Synchronization

Comment synchronization allows teams to collaborate in the tools they're using, instead of using other tools like email or Slack. This means that you have an historical record of communication that's attached to the artifact, and comments can be attributed to the person that made them – even if their user ID doesn't appear in all synchronized tools. Imagine being able to see the conversation history if a bug becomes a regression!

Integrate Uniquely Configured Tools with Custom Transformations

Our pre-built transformations take care of most scenarios when flowing artifacts between tools that have different ways of representing and managing artifacts. But what about those tools that you had to customize? Planview Tasktop provides the ability to invoke scripts instead of standard transformations so that you can fit these tools neatly into your integration landscape as well.



Monitor Your Integrations With Activity & Metrics Dashboards

Your integrations are all set up – now how do you know what's actually happening? Get the operational visibility you need with Planview Tasktop's with just a few clicks. Visually

integrate your tools landscape as you define conditional routes for artifacts to flow to specific repositories and projects, create filters, and graphically map artifact state transitions across toolchains. You get an intuitive user experience for defining and tuning the flow of information across your integration landscape.

Smart Change Detection Enables High Performance with Low Impact

Our smart change detection granularly changes only the information that needs to be changed, minimizing the performance impact on the integrated tools. Planview Tasktop's data architecture is designed specifically to interact with tools without degrading their performance.

Advanced Planview Tasktop Admin User Management

Planview Tasktop makes it easy for anyone to get an integration set up. But to ensure your instance is secure, our user management features allow only authorized members of your organization to configure and edit your integration landscape. Easily tie into LDAP or Active Directory; two-factor authentication and enforce password policies.

Person Matching Across Tools – Even if User Names Differ

A.Jones in one tool can often be Andrew.Jones in another tool, which can make it difficult to match user names across the many tools you might have in your software development lifecycle. Planview Tasktop has built-in functionality that can automatically look at various user fields to find a match. For more complex environments custom scripted options are available to link with LDAP and make sure artifacts are always attributed to the right person.

WANT TO KNOW MORE?

Seeing is believing. For a more visual overview of how the Planview Tasktop Hub Cloud connects tools and people to improve the effectiveness of your software delivery, check out our features page: tasktop.com/features.

You can also schedule a demo so we can walk through what your integrated value stream might look like.



Copyright © 2022 Planview. All rights reserved.

[Learn More](#)