

## Solution brief

# Lead Transformation for Your Business

## Reinvent Enterprise Architecture, Reinvent the Enterprise

CEOs say that at least 15% of company growth will be driven by digitization over the next three years, with a strong focus on the customer experience and product innovation.<sup>†</sup>

Going digital means reinventing the enterprise. Well-positioned enterprise architects can take the opportunity to lead in transformation initiatives, but it often means a reinvention of capability and technology management as well.

### The right solution for today's enterprise architect

Ask yourself: Are you using software that will help you make this reinvention real? A simple modeling tool likely won't get you there; the breadth of today's demands outpaces what these tools can deliver.



Planview® solution for Capability and Technology Management enables you to:

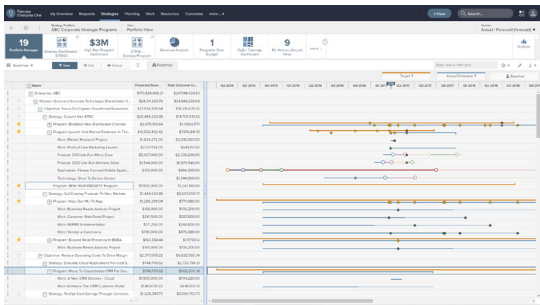
- ✓ Define technology and capability roadmaps that support corporate strategy
- ✓ Reduce the risk and business impact of rapidly accelerating innovation in technology
- ✓ Deliver a flexible application and technology portfolio optimized for business strategy and capabilities
- ✓ Engage with the broader organization to drive change
- ✓ Analyze business capability gaps and the technology changes required to close those gaps

Help your organization reinvent itself. Let's examine what this solution can do.

**Drive transformation with an integrated strategy roadmap.**

Connect strategy, business capabilities, technology, and investments to enable better prioritization, trade-offs, and alignment.

Easily adapt plans as conditions change with timeline visualizations that shed light on relationships and interdependencies.

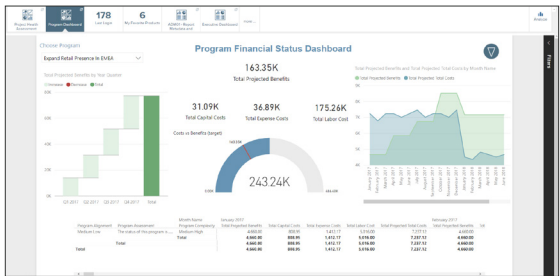


**Use analytics and visualizations for better business decisions.**

Contextualize technology for the business with insightful visualizations that combine interactive analysis with comprehensive modeling.

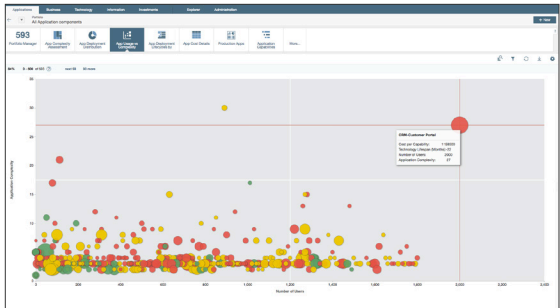
Leverage Microsoft Power BI content packs for a consolidated view of data from all your application and technology portfolios to make faster decisions and support the business more effectively.

Deliver results quickly when you leverage the extensible native meta-model in the Planview solution. Data consistency is ensured with the repository-based visual modeling capability that creates a consistent view of your technology across your entire enterprise architecture team.

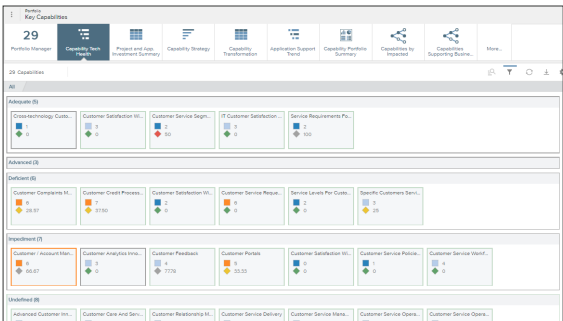


**Manage your application portfolios.** Understand dependencies between application portfolios, the underlying technology stack, and business capabilities and projects to achieve business strategies.

Support growth by standardizing and rationalizing technology and application portfolios. Minimize risk and business disruption with a comprehensive picture of the impact of change on applications and capabilities.

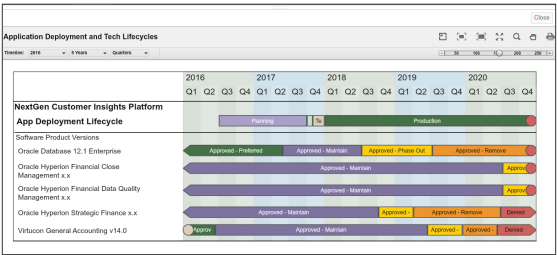


**Advance strategy with business capability planning.** Evaluate business capabilities against business goals and know where the gaps lie to mature the capability portfolio. Define a capability roadmap that drives corporate strategy; help the business understand how to invest appropriately to make that come to life by placing capabilities in a business context.



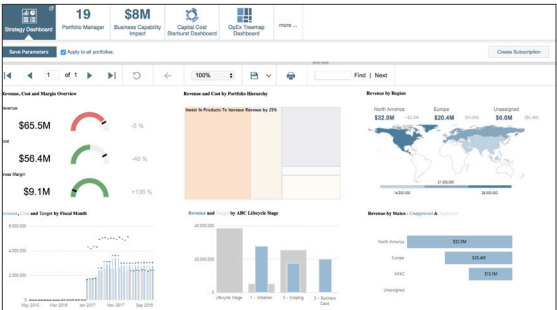
**Standardize your technology portfolio.** Proactively plan and prioritize technology updates for predictable implementation times and costs. Translate business requirements into technology standards to ensure strategic objectives are met while reducing risk.

Document standards, usage, and lifecycles for governance and compliance reporting; easily identify unapproved versions. Use pre-built visualizations to grow accountability with on-demand audits and compliance reporting.



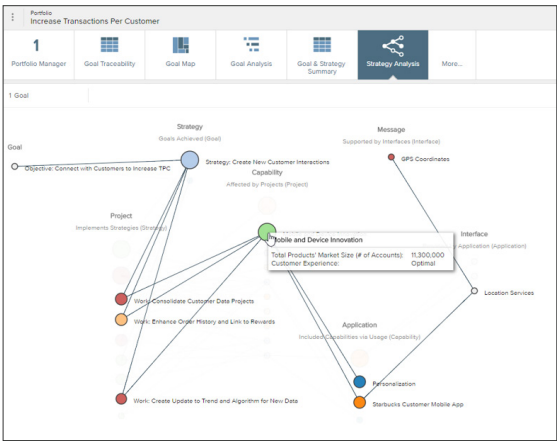
**Measure progress and accelerate performance.** Keep stakeholders across the enterprise in the know about plan status. Define metrics, assess the ROI, and adjust the plan to maintain strategic focus.

Strategic dashboards communicate progress and interactive visualizations drill into trends. Accountability improves and risk declines as strategic performance is measured and communicated.



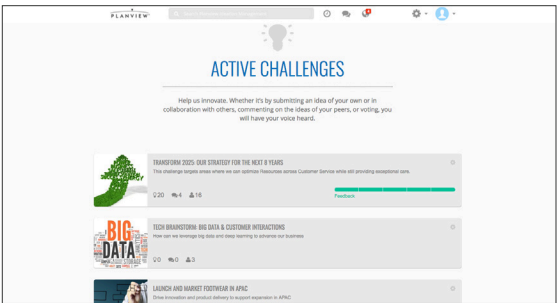
**Integrate strategy, work, resources, and technology.** Integrate portfolios to bring together the PMO and EA teams with unified processes for managing demand, strategy, and technology.

By connecting capability and technology management with portfolio and resource management, you get a clear link between current state and projects that drive to future state. Now EA, PMO, and broader IT teams can move at the speed of business while optimizing technology decisions.



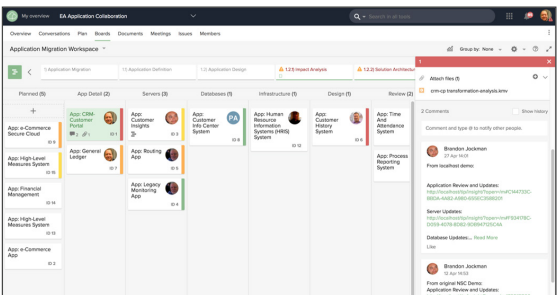
**Engage the entire organization to drive change.** Find high-potential ideas to turn technology trends into innovation initiatives that transform your business. Get input from across the enterprise to explore opportunities and risks.

Centralize and automate idea capture, evaluation, and prioritization from customers and stakeholders. Automatically route ideas for research and analysis.



**Bring teams together to get more done.** Create collaborative workspaces to execute enterprise architecture projects and engage with stakeholders, both internal and external. Organize and join teams; make and discuss plans; assign, execute, and track work, and share documents securely; all while keeping communication and progress transparent.

Deliver common enterprise architecture artifacts easily when you can see the flow of work and progress on each deliverable. Kanban boards help visualize assigned tasks, and simple but secure document sharing enables working parallel without confusing version control issues.



The Planview solution for capability and technology management combines the power of:

- Planview® Enterprise One for enterprise-wide strategic execution
- Planview Ideation Management to fuel innovation and engage the enterprise
- Planview Projectplace® for collaborative work management



▼ Planview Ideation Management



Learn how Planview can help your enterprise architecture team be the transformation leader for your organization.

Visit [Planview.com/LP/EA-On-Demand-Demo](https://planview.com/LP/EA-On-Demand-Demo) today or contact us at [market@planview.com](mailto:market@planview.com) to learn more.

The Planview Capability Technology Management solution is one of our work and resource management solutions. Work and resource management is a new approach for a growing problem. Getting work done today – work that delivers on strategy – is becoming increasingly difficult. Rapidly changing market forces are working against your organization, and the stakes have never been higher.

Complexity in integrating strategy and execution is inevitable, and your path to innovation is fraught with challenges. The key to reach your goals is realizing your organizational resource potential. And that is what Planview work and resource management solutions empower organizations to do in the areas of strategic planning, portfolio and resource management, product innovation, enterprise architecture, and collaborative work management.

†The digital tipping point: McKinsey Global Survey results. (2017). McKinsey & Company. Retrieved 9 May 2017, from <http://www.mckinsey.com/business-functions/digital-mckinsey/our-insights/the-digital-tipping-point-mckinsey-global-survey-results>